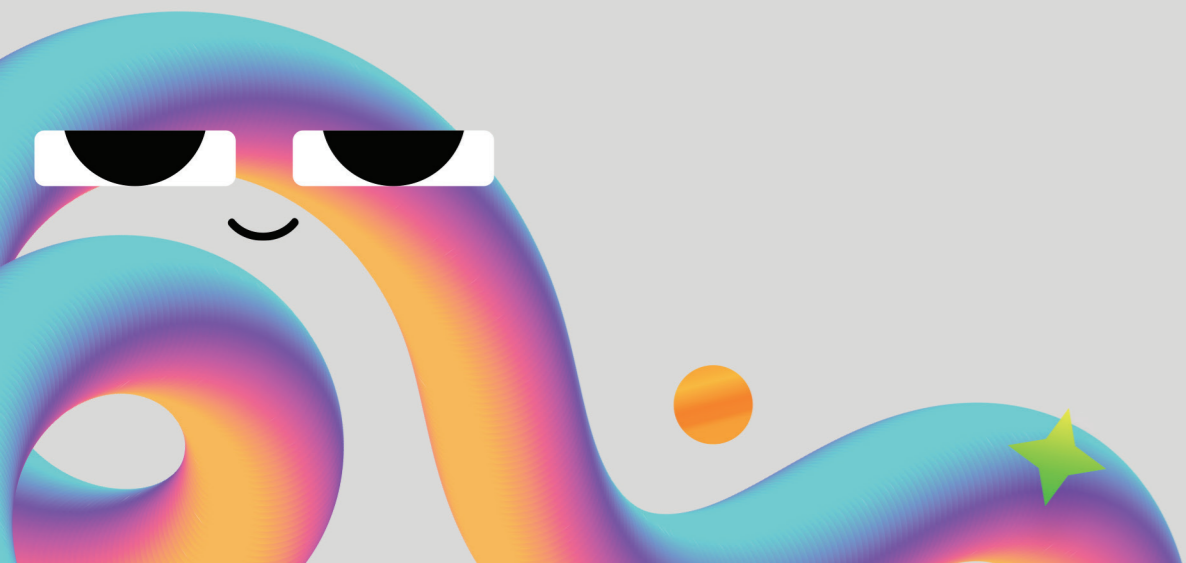


lumin



lumin  
SERIOUSLY  
PLAYFUL



# LUMIN

## SERIOUSLY PLAYFUL

The ultimate fun-to-drive experience is here! True to the Urban Seeker's spirit, it combines style, performance, and excitement for every journey.



## UNIQUE EXTERIOR DESIGN

Playful urban style that turns heads at every corner. Every detail crafted to reflect stylish, modern personality.



### MOON EYE LED HEADLIGHTS & REAR LAMPS

Iconic half moon design LED lamp that shines with style.



### STYLISH-MINIMALIST DOOR HANDLE

Smooth body design effectively reduces wind resistance.



### 14" WHEEL HUB TIRE

Big wheel hub with a stylish cover and balanced proportions creates a stronger visual impression.

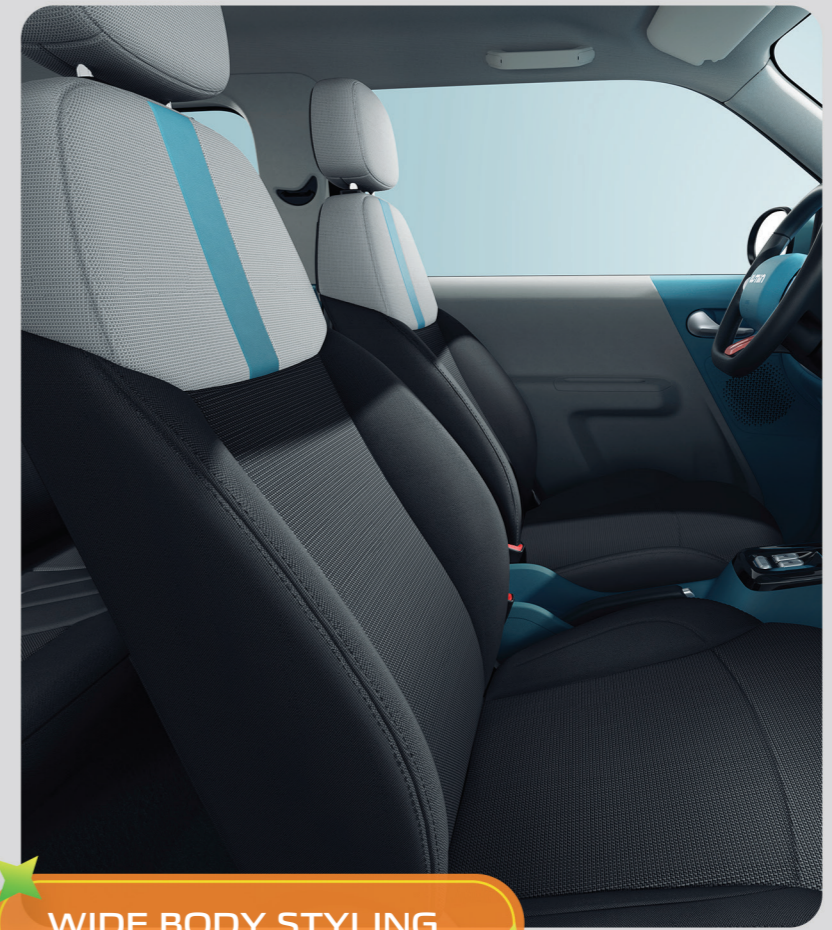


### SPACIOUS INNER CABIN

Comfort and space in perfect balance.

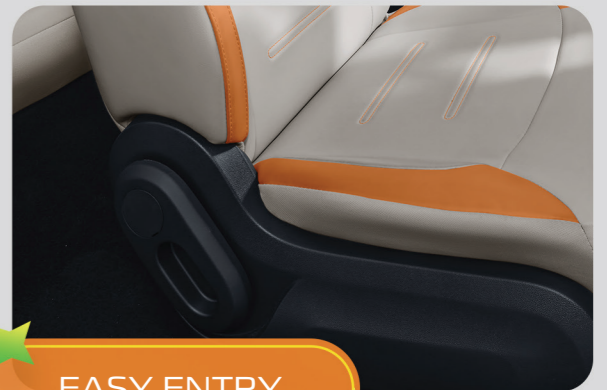
## UNEXPECTEDLY ROOMY INTERIOR

Lumin spacious interior will surprise you. Enjoy comfortable seats with two stylish color options that are designed to turn every ride unforgettable.



### WIDE BODY STYLING

The dimensions are larger than any vehicles in its class.



### EASY ENTRY

Easily lifted and pulled in one step.



### FOLDABLE REAR SEATS

Reclining backrest expand cargo space to 580L.



10.25" SMART LED HEAD UNIT DISPLAY

Modern, user-friendly large touchscreen.



KEYLESS CONVENIENCE

Unlock and start effortlessly, just by carrying the key.



ELECTRONIC GEAR SHIFTER

Convenient knob-style shifter for easy operation.

# SMART FEATURES SMARTER DRIVE

Equipped with intelligent technology for a seamless, smart driving experience.





**lumin**

### DC FAST CHARGING

Faster charging time, 30% to 80% in 35 minutes with max. Power of 35 kW.

# FREEDOM IN EVERY DRIVE

Delivers a lightweight, smooth acceleration and responsive driving experience.



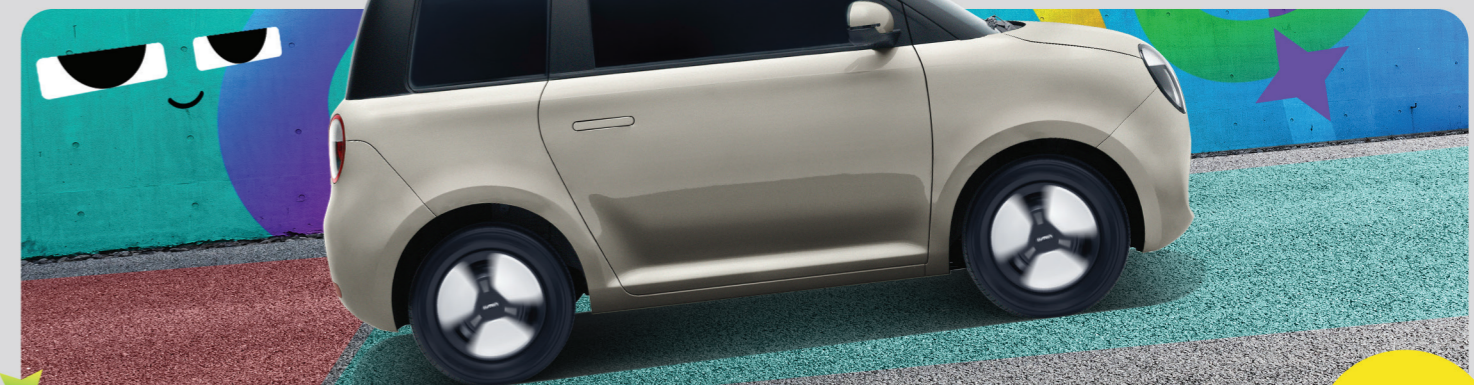
### WORRY-FREE LONG RANGE

More than 300 km (NEDC) of pure peace of mind.



### RESPONSIVE 35 kW MOTOR

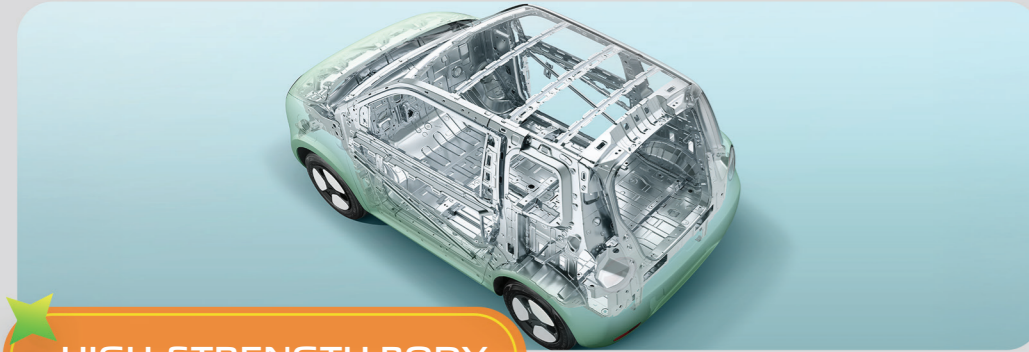
Acceleration time 6.5 seconds (0-50 km/h).



### NBOOSTER SMART BREAKING SYSTEM

3-second hill-start assist to prevent rollback.

# SMART - SAFETY - READY



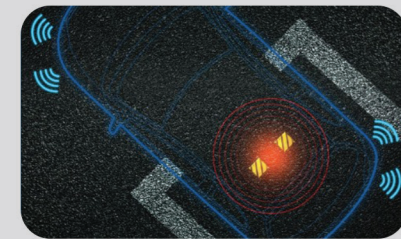
## HIGH-STRENGTH BODY

High-strength steel body with advanced safety engineering for everyday driving.

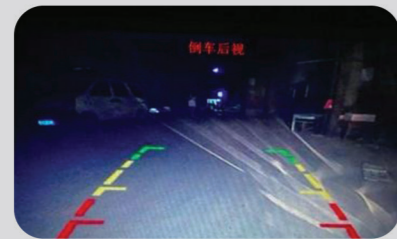


## FRONT PASSENGER AIRBAG

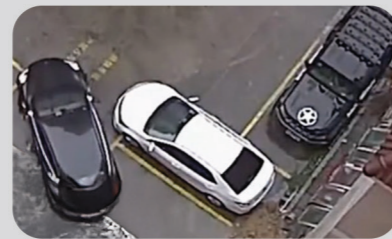
Small on size, big on safety with dual front airbags.



Accurate radar detection in low-light conditions.



Clear visuals with fewer blind spots.



Radar + image = enhanced accuracy.

## REAR PARKING SENSORS

Rear sensors and camera ensure safe, convenient reversing anytime.

## AVAILABLE INTERIOR COLOR OPTION:



## GRAY - BLACK



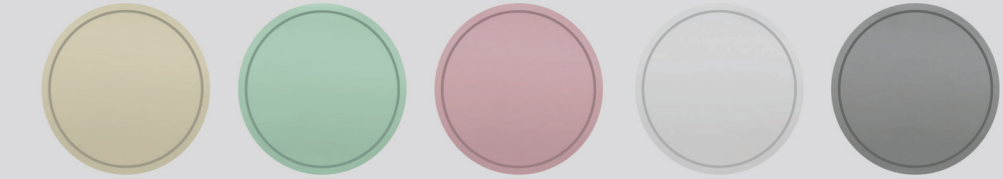
## LIGHT GRAY - ORANGE

## SPECIFICATIONS

Item	lumin
<b>POWER TRAIN</b>	
Motor Type	Permanent Magnet Synchronous Motor
Configuration	Front-wheel Drive
Maximum power (kW)	35
Maximum Torque (Nm)	83
Battery Type	Lithium Iron Phosphate
Battery Capacity	28.08 kWh
All Electric Range	301 km (NEDC)
<b>STEERING SYSTEM</b>	
Type	Electric Power Steering (EPS)
<b>BRAKE</b>	
Front Suspension System	MacPherson Strut
Rear Suspension System	Trailing Arm
Front Braking System	Disc Brake
Rear Braking System	Drum Brake
Parking Brake	Mechanical Hand Brake
<b>DIMENSIONS</b>	
Length x Width x Height (mm)	3270 x 1700 x 1590
Wheelbase (mm)	1980
Wheel, Tire	Steel 14" with Wheel Cover, 165/70 R14
<b>EXTERIOR</b>	
Outside Mirror	Side Door Mirrors with Turning Light
Head Lamp	Projector Halogen Headlights
Rear Combination Lamp	LED Rear Position Light
Rear Spoiler	High Mount Stop Lamp
Tailgate	Manual Tailgate
<b>INTERIOR</b>	
Steering Wheel	Multi-function Steering Wheel
Power Window	Driver and Passenger
Meter Cluster	7 Inches LCD Meter
Vanity Mirror	Front Sun Visors with Mirrors
Rear Centre Mirror	Dimming Rearview Mirror
Front Seat (1st Row)	Front Fabric Seats
Rear Seat (2nd Row)	50:50 Foldable Rear Seats
<b>SAFETY AND SECURITY</b>	
Body Structure	3 Doors
Airbags	Front Airbags (2)
Tire Pressure Monitoring System	Tire Pressure Alarm
Safety Belt	Front Seat Belt 3 Point
Parking Sensor	Rear Parking Sensors
Safety Features	Driver Seat Belt Reminder Speed Sensing Auto Door Lock Auto Door Unlock upon Collision Electronic Stability Program (ESP) Anti-lock Braking System (ABS) Electronic Brake Distribution (EBD) Hill Hold Control (HHC) Rear Camera
<b>AUDIO AND SPEAKER</b>	
Head Unit	10.25" Touchscreen
Speakers	2 Speakers
<b>COMFORT</b>	
Air Conditioning	Air Conditioning System
Start Stop Button & Keyless Entry	Start Stop Button & Keyless Entry
Drive Mode & Terrain Mode	Drive Mode (ECO/SPORT)
USB Port	Front and Rear USB
Power Socket	12 V Power Socket
<b>CHARGING TIME</b>	
AC Charge Time (0% - 100%) (h)	> 10 Hours
DC Charge Time (30% - 80%) (min)	35 min

\*Terms and conditions apply.

## FUN COMES IN VIBRANT COLORS



Wheat Yellow Moss Green Sakura Powder Foggy White Magpie Gray

## WARRANTY\*

**6 YEARS**  
/120.000 KM\*

**FREE SERVICE PACKAGE:**  
**4 YEARS**  
/80.000 KM\*

**BATTERY**  
**8 YEARS**  
/120.000 KM\*

\*WHICHEVER OCCURS SOONER

**CHANGAN** PT Dinamika Indomobil Transportasi  
Member of **INDOMOBIL GROUP**

